

CHURCH BUILT 60 YEARS AGO

This month marks the 60th anniversary of the opening of the Baptist Tabernacle on the corner of Liardet and Lemon Sts, New Plymouth. It is the second chapel owned by the church in the city.

Origins of the church in New Plymouth are obscure, but the Taranaki Herald of March 14, 1868, records the laying of a foundation stone for a chapel to be used by Baptists on the corner of Gill and Liardet Sts. It was known as the Gill St Baptist Church.

The present church was built in 1913 by Robert Coleman.

On October 4, 1913, the first service in the new church was conducted by the Rev. F. Hales, and the Rev. William Drew became the first resident minister.

The church's exterior was modelled on that of the Auckland Baptist Tabernacle, which was copied from that of the Metropolitan Tabernacle in Southwark, London.

230-CAPACITY

Today the auditorium has a seating capacity of 230, which incorporates three small rooms originally part of the interior.

Recently modern pews were added, while the walls were lined with timber.

A large piece of beach stone, the gravestone of a former

church member, was made into the door step of the building.

A foundation stone for the Gill St church was laid about 1868, but the building was not opened for religious services for many years.

Bearing the incorrect inscription "This stone is part of the original Gill St Church, 1865," a section of the south wall is generally believed to be the foundation stone of the old church.

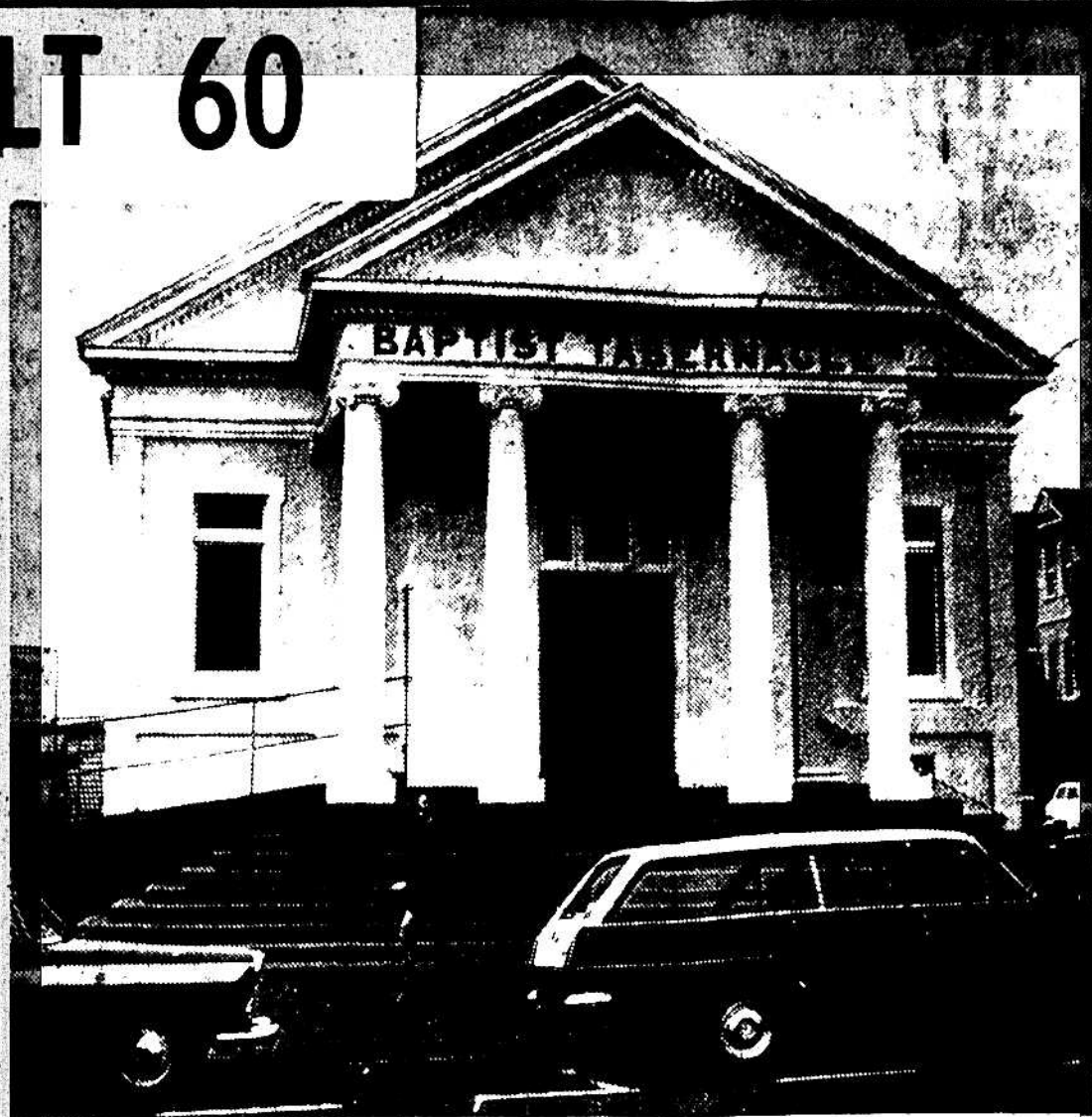
No special celebration is planned to mark the anniversary.

Development plan is approved

Future development at Egmont Village will be confined to the area north of Junction Road, the Inglewood County Council decided at its monthly meeting yesterday.

The council adopted a recommendation from Mr A. Brodie, and the town planning committee report.

Restricted to land east of the Araheke stream, the



THE BAPTIST TABERNACLE, in Liardet St . . . 60 years old this month.

ROAD HAZARD IN INGLEWOOD COUNTY

Concern at the hazards presented by a sharp bend on Junction Rd at the Ta-

the east riding was desired.

A schedule showing a three-year forecast of expendi-

division plan for a 4½ acre bordering Olsen St was re-fused.